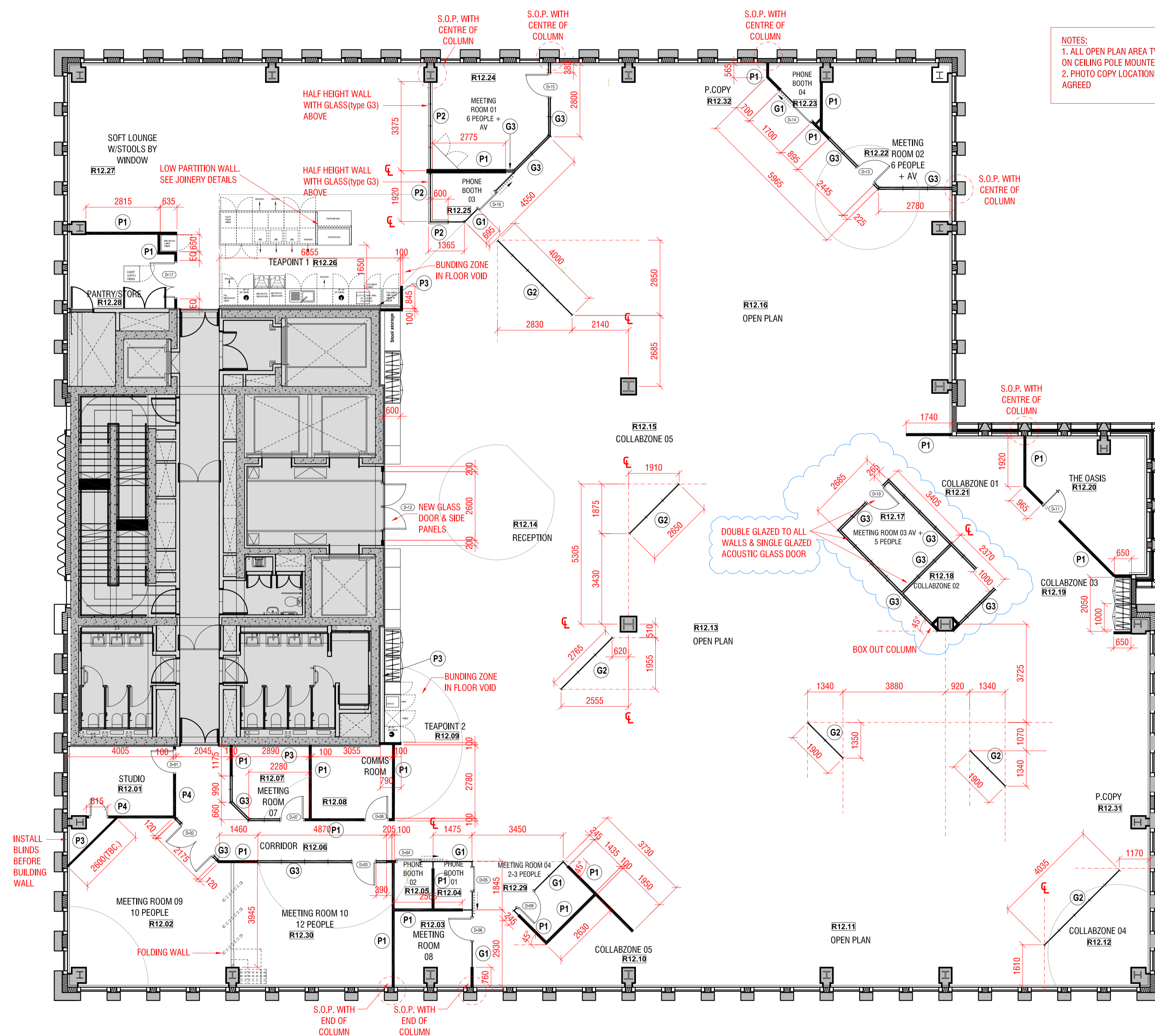


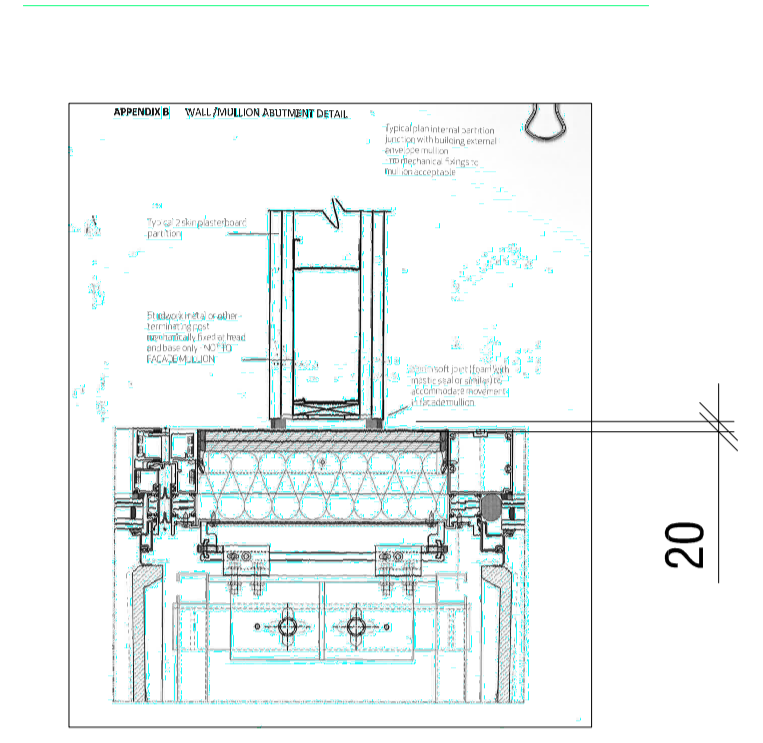
**LEGEND - NEW WALLS**

- P1** — RAF to U.S.CEIL.  
DOUBLE SKINNED PARTITION WITH 2x  
SOUNDBLOC PLASTERBOARD WITH  
ROCKWOOL INFILL  
RAISED FLOOR TO CEILING.  
ACOUSTIC CEILING BARRIER IN VOID
  - P2** — RAF to U.S.CEIL.  
DOUBLE SKINNED PARTITION WITH 2x  
SOUNDBLOC PLASTERBOARD WITH  
ROCKWOOL INFILL  
RAISED FLOOR TO 1500mm AFFL WALL &  
DOUBLE GLAZED FROM 1500mm TO  
CEILING  
ACOUSTIC CEILING BARRIER IN VOID
  - P3** — PLY LINED PARTITION WITH 1 LAYER  
PLASTERBOARD
  - P4** — RAF to U.S.SLAB  
DOUBLE SKINNED PARTITION WITH  
PARTITION WITH 2x SOUNDBLOC  
PLASTERBOARD WITH ROCKWOOL INFILL  
RAISED FLOOR TO SLAB. HEAD CHANNEL  
TO HAVE 20mm DEFLECTION
  - G1** — RAF to CEILING  
SILICON JOINTED SINGLE GLAZING  
PARTITION SYSTEM. BLACK FRAMES FOR  
GLASS.  
12.8mm ACOUSTIC GLASS
  - G2** — RAF to CEILING  
SILICON JOINTED SINGLE GLAZING  
PARTITION SYSTEM. BLACK FRAMES FOR  
GLASS.  
12mm GLASS
  - G3** — RAF to CEILING  
SILICON JOINTED DOUBLE GLAZING  
PARTITION SYSTEM. BLACK FRAMES FOR  
GLASS.
- 
- FD30S** 1/2 HOUR FIRE RATED DOOR
  - FD20S** SMOKE DOOR
  - VP** VISION PANEL
  - SC** SELF CLOSING
  - (CND)** NEW DOOR REFERENCE

2750mm - FLOOR TO CEILING HEIGHT  
130mm - CLEAR FLOOR VOID  
700mm - CLEAR CEILING VOID



**NOTES:**  
1. ALL OPEN PLAN AREA TV SCREENS ARE  
ON CEILING POLE MOUNTED.  
2. PHOTO COPY LOCATIONS TO BE  
AGREED



**TYPICAL MULLION DETAIL FIXING  
WITH 20mm SOFT JOINT. NO  
MECHANICAL FIXING TO MULLION**

This drawing is protected under Copyright and at no time  
must any portion of this drawing be reproduced or copied  
in anyway without the permission of Morgan Lovell.

SUBJECT TO SITE SURVEY  
CHECK SURVEY UNDERTAKEN ONLY  
BUILDING PARAMETERS TAKEN FROM  
DRAWINGS PROVIDED  
BUILDING PARAMETERS TAKEN FROM  
AS BUILT DRAWINGS PROVIDED

| Rev | Revision                        | By | Date     |
|-----|---------------------------------|----|----------|
| B   | ROOM R12.17 & 18 REVISED        | VM | 03.11.17 |
| A   | REVISED TO SUIT GA REVISION - E | VM | 26.09.17 |
| -   | FIRST ISSUE                     | VM | 05.09.17 |

**CONSTRUCTION**

Morgan Lovell

16 Noel Street London W1F 8DA  
T: 0207 734 4466 F: 0207 734 2968 E: contact@morganlovell.com  
W: http://www.morganlovell.com

**Client**  
**R3**

**Project**  
12th Floor  
2 London Wall Place  
EC2

**Title**  
**12th FLOOR  
PROPOSED PARTITIONS**

| Scale      | Date       | Designer/Drawn By | Checked By / Date |
|------------|------------|-------------------|-------------------|
| 1:100 @ A1 | 04.09.2017 | VM                | -                 |

| Project No.   | Floor     | Drawing No. | Rev      |
|---------------|-----------|-------------|----------|
| <b>ML2552</b> | <b>12</b> | <b>101</b>  | <b>B</b> |

